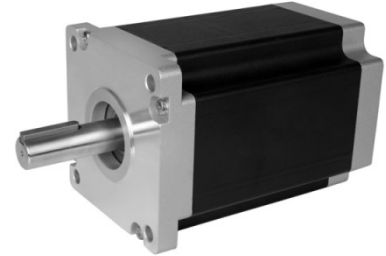


## 2 Phase Hybrid Stepper Motor

### 110PH Series, 1.8 degree, Nema 42, 110 mm

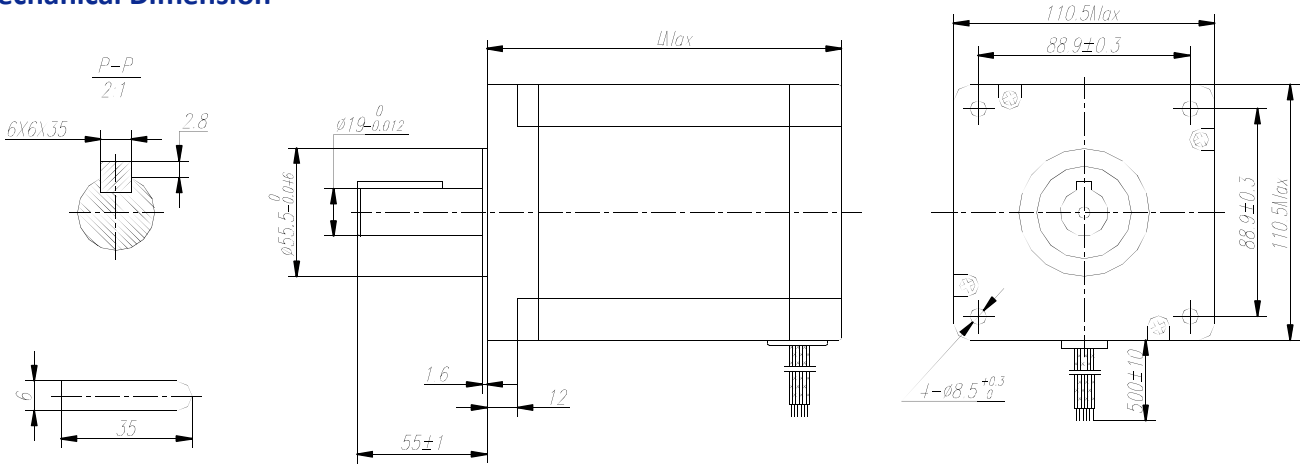
Step Angle	1.8°
Step Angle Accuracy	±5% (full step, no load)
Resistance Accuracy	±10%
Inductance Accuracy	±20%
Temperature Rise	80 °C Max.(rated current, 2 phase on)
Ambient Temperature	-10 °C ~ +50 °C
Insulation Resistance	100 MΩ Min., 500VDC
Dielectric Strength	1800VAC, 1s, 5mA
Shaft Radial Play	0.02 Max. (450 g-load)
Shaft Axial Play	0.08 Max. (920 g-load)



#### ■ Technical Specifications

Model	Current	Resistance	Inductance	Holding Torque	Detent Torque	Rotor Inertia	Bi/Unipolar	Weight	Length
	A/∅	Ω/∅	mH/∅	Nm	Nm	kgcm <sup>2</sup>	# of Leads	kg	mm
110 PH 23	6.5	0.8	15	23	0.60	11.0	Bi (4)	8.4	150
110 PH 30	6.5	1.0	21	30	0.75	15.0	Bi (4)	12.0	200

#### ■ Mechanical Dimension



#### ■ Wiring Diagram

